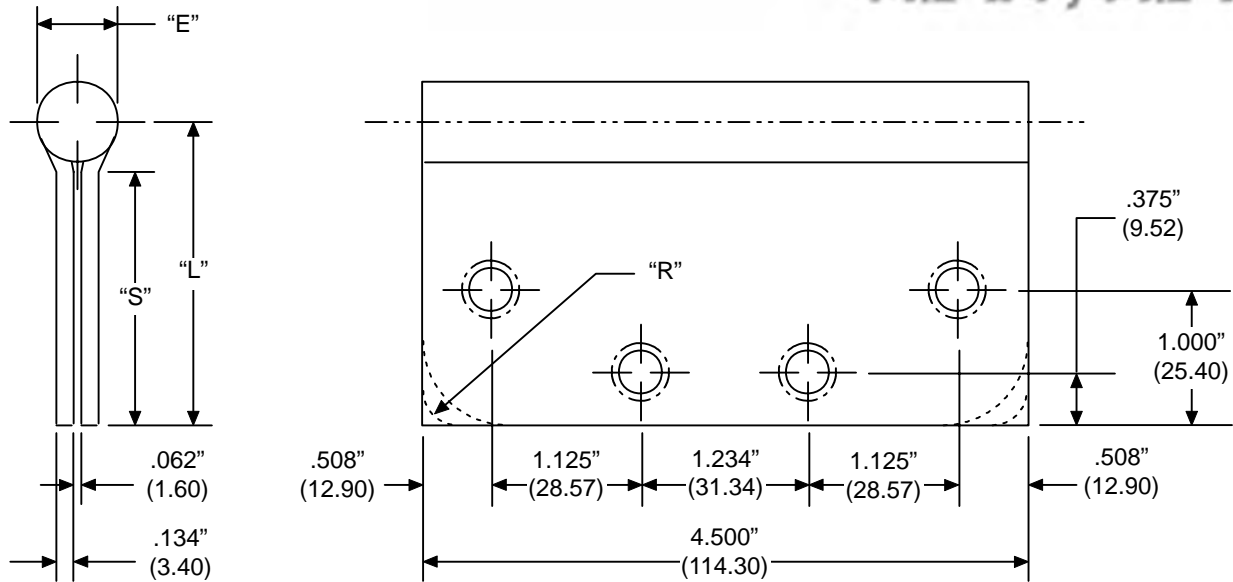




**FULL MORTISE STANDARD WEIGHT TEMPLATE**

**BB - PB - CB - CP - FB**  
**4-1/2" x 4", 4-1/2" x 4-1/2"**



Part Number			Gauge of Metal	"E" Outside Dia.	"L" Leaf Width	"S" Swage Line	"R" Corner Radius
Steel	Brass	Stainless					
BB81/CB81	BB21/CB21	BB51/CB51	.134"	.600"	2.00"	1.63"	Square, 1/4", 5/8"
PB81/CP81	PB21/CP21	PB51/CP51	.134"	.600"	2.00"	1.63"	Square, 1/4", 5/8"
BB81/CB81	BB21/CB21	BB51/CB51	.134"	.600"	2.25"	1.88"	Square, 1/4", 5/8"
PB81/CP81	PB21/CP21	PB51/CP51	.134"	.600"	2.25"	1.88"	Square, 1/4", 5/8"

**NOTE:**

- 1 screw pack includes all machine screws (24), and 1/2 wood screws (12). ATMS & AWS also available.
- Screw size: FHMS - 12-24 x 1/2"  
FHWS - 12 x 1-1/4"
- All hinges are ANSI template.