
6100 SERIES

#161 PREP PUSH-PULL LATCH



Patent No. 6,196,599
5,730,478

**WHEN ORDERING,
Please list:**

Backset

Strike

Finish

**Engraving
(if required)
Add Suffix P
Indicate how handles
are mounted**

- **Push-Pull trim can be mounted with one side vertical, one side horizontal without modification to parts or doors.**
- **Uses government standard #161 door cut-out. No additional door prep required.**
- **Available with 2³/₄" or 5" backset latches.**
- **Standard or ASA strike.**
- **UL listed for all fire doors.**
- **Available in all BHMA finishes**
- **Lead-lining available.**
- **Standard for 1 3/4" thick doors.**

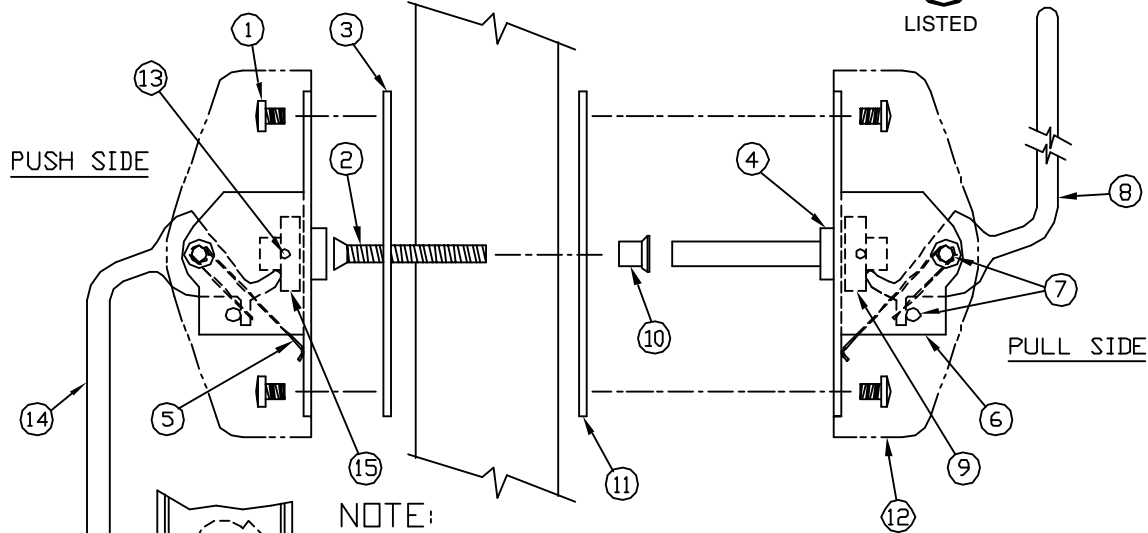
www.abhmfg.com
E-mail: abhinfo@abhmfg.com
Architectural Builders Hardware Mfg., Inc.
1222 Ardmore Ave., Itasca, IL 60143
630.875.9900; FAX 800.9FAXABH (932.9224)

© 2005 ABH Mfg., Inc.
Printed in USA 02/05

ABH[®]

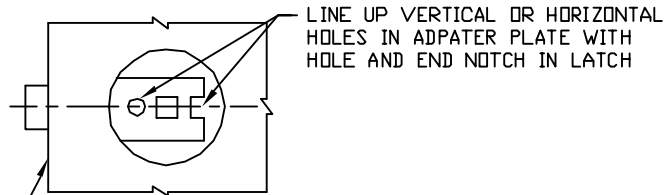
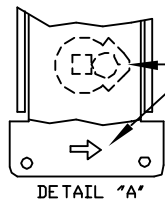
6100 FOR #161 DOOR PREP

cULus
LISTED

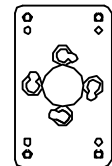


NOTE:

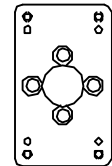
BEFORE MOUNTING PUSH AND PULL HANDLES, CAM PIN MUST BE ROTATED TOWARD SIDE INDICATED BY ARROW STAMPED ON BASE



DOOR TO BE MACHINED FOR STANDARD #161 PREP



PULL SIDE ADAPTER PLATE (ITEM 11)



PUSH SIDE ADAPTER PLATE (ITEM 3)

ITEM	QTY	PART	ITEM	QTY	PART
1	8	10-32 X 1/4 TRUSS HD. M.S.	9	1	CAM ASSEMBLY (MALE)
2	2	12-24 x 1-7/8 F.H.M.S.	10	2	(2) 12-24 LOCK NUT
3	1	PUSH SIDE ADAPTER PLATE	11	1	PULL SIDE ADAPTER PLATE
4	2EA	WASHERS & C-RING	12	2	COVER
5	2	SPRING	13	4	8-32 X 3/8" F.H.M.S.
6	2	MOUNTING BRACKET	14	1	PUSH SIDE HANDLE
7	4EA	HANDLE SHAFT & COTTER PIN	15	1	CAM ASSEMBLY (FEMALE)
8	1	PULL SIDE HANDLE			

NOTES:

- BEFORE MOUNTING ADAPTER PLATES, DETERMINE WHICH SIDE OF THE DOOR WILL RECEIVE THE PUSH OR PULL HANDLES AND THE DIRECTION THE HANDLES WILL MOUNT. HANDLES CAN BE MOUNTED UP, DOWN OR HORIZONTALLY OR ANY COMBINATION.
- MOUNT ADAPTER PLATES (ITEMS 3 & 11) TO DOOR WITH (2) 12-24 X 1-7/8" F.H.M.S. (ITEM 2) THRU DOOR LATCH TO 12-24 LOCK NUTS (ITEM 10). TIGHTEN SECURELY.
- BEFORE TRIM INSTALLATION, CAM PIN MUST BE ROTATED TOWARD SIDE INDICATED BY ARROW STAMPED ON BASE (SEE DETAIL A).
- MOUNT TRIM ASSEMBLY TO ADAPTER PLATE WITH (4) 10-32 X 1/4" PAN HD M.S. (ITEM 1).
- MOUNT COVERS WITH (2) 8-32 X 3/8" F.H.M.S. (ITEM 13).

PATENT No. 6,196,599 & 5,730,478

www.abhmfg.com

E-mail: abhinfo@abhmfg.com

Architectural Builders Hardware Mfg., Inc.

1222 Ardmore Ave., Itasca, IL 60143

630.875.9900; FAX 800.9FAXABH (932.9224)

© 2005 ABH Mfg., Inc.
Printed in USA 02/05

ABH®