



High-quality, architecturally pleasing, innovative access doors for walls, ceilings, ducts, floors and roofs



# Floor Door Non Hinged, Flush Diamond Plate FD-8060

## Application

- Designed for interior and exterior applications that require an access opening that will blend in with the surrounding floor material

## Product Features

- Flush Diamond Plate door panel
- Door panel removable via screws

## FD-8060 Floor Door Specifications:

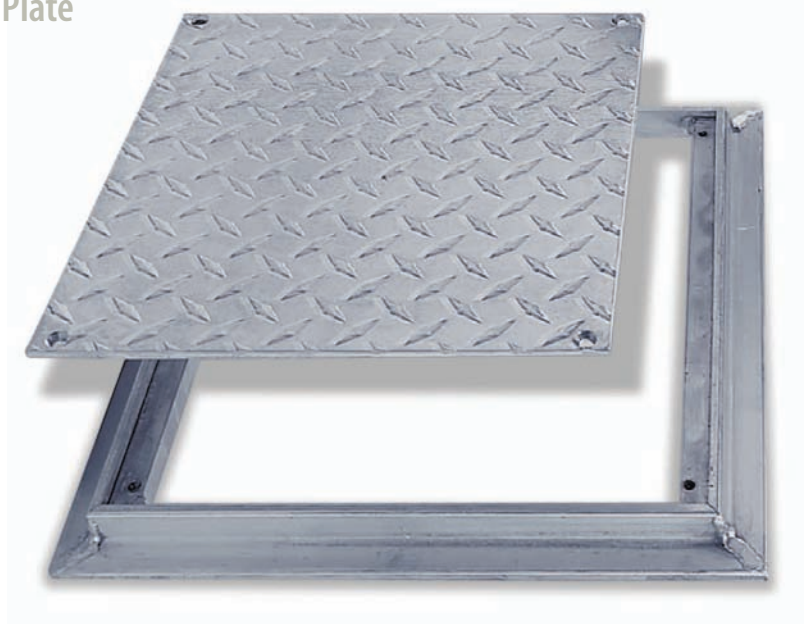
**Material:** Aluminum

**Door:** 1/4" aluminum diamond plate reinforced for the live load of 150 pounds/per sq. ft.

**Frame:** 1" x 1" aluminum angle designed to be cast into concrete

**Standard Latch:** Door panel is secured to frame with 1/4" x 1" flat head screws

**Finish:** Mill finish



## AVAILABLE SIZES *(Special sizes available upon request)*

NOMINAL DOOR SIZE W X H		WEIGHT PER DOOR	
inches	mm	lbs.	kg.
8 X 8	203 X 203	4	1.8
12 X 12	305 X 305	6	2.7
18 X 18	457 X 457	12	5.5
24 X 24	610 X 610	24	10.9
For detailed specifications see submittal sheet			

