



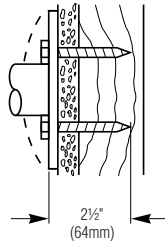
Concealed Mounting Kits

Order one mounting kit per grab bar flange.

Stud walls with wood supports

899-010

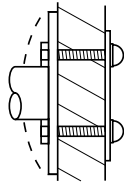
MATERIAL INCLUDED
2 - 1/4 x 2 1/2" PLATED
STEEL HEX HEAD LAG BOLTS



Partition walls

899-011

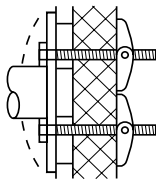
MATERIAL INCLUDED
A) 2 - 1/4-20 x 1 1/2"
PLATED STEEL HEX HEAD
MACHINE SCREWS
B) 2 CAP NUTS
C) 1 BACKING PLATE



Panel walls

899-012

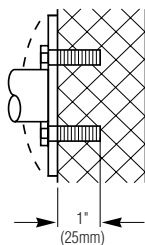
MATERIAL INCLUDED
A) 2 - 1/4-20 x 3"
PLATED STEEL HEX
HEAD MACHINE
SCREWS
B) 2 TOGGLE NUTS



Masonry walls

899-013

MATERIAL INCLUDED
A) 2 - 1/4-20 x 1"
PLATED STEEL HEX HEAD
MACHINE SCREWS
B) 2 - 1/4-20 LEAD ANCHORS



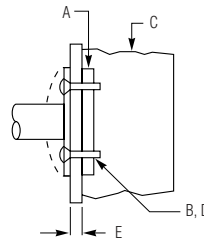
Metal Stud Wall Mounting Kits

899-014

(CONCEALED OR EXPOSED)
MATERIAL REQUIRED
A) IN-WALL ANCHOR PLATE
899-015 (NOT INCLUDED).
SPECIFY AND ORDER
SEPARATELY - SEE ANCHOR
PLATES IN NEXT COLUMN.

- B) #10 sheet metal screws (furnished by others)
- C) METAL STUD
- D) 2 - 1/4-20 x 1 1/4" FLAT HEAD machine SCREWS.*
- E) WALL DIMENSIONS (TO BE FURNISHED IF OVER 3/4").

* INCLUDED WITH MOUNTING KIT 899-014.

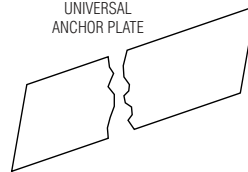


In-Wall Anchor Plates

899-015

x LENGTH (TO 96")
MATERIAL
4" x 1/8" COLD ROLLED STEEL -
LENGTH AS SPECIFIED TO 96"
NOTE: SEPARATELY ORDER
899-014 MOUNTING KITS
AS REQUIRED.

UNIVERSAL
ANCHOR PLATE



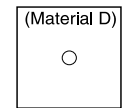
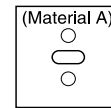
INSTALLATION:
FASTEN TO STUDS BEFORE WALL APPLIED.
RECESS AS REQUIRED FOR FLUSH FINISH WALL APPLICATION.
TO ATTACH GRAB BAR, DRILL #2 (.221 DIAMETER)
HOLES THRU WALLBOARD AND ANCHOR PLATE.
ATTACH WITH 1/4-20 x 1 1/4" PLATED PHILLIPS
OVAL HEAD ROLLOCK TAPPING SCREWS.

Block Wall Mounting Kits

899-016

(CONCEALED OR EXPOSED)

FRONT ANCHOR PLATE BACK ANCHOR PLATE



MATERIAL REQUIRED

- A) FRONT ANCHOR PLATE 3" x 3" x 1/8" COLD ROLLED STEEL - CENTER SLOT PUNCHED AND 2 FASTENER HOLES PRE-PUNCHED.*
- B) 2 - 1/4-20 x 1 1/4" PLATED PHILLIPS FLAT HEAD SELF TAPPING SCREWS.*
- C) 1 - 3/8-16 STEEL ZINC-PLATED TIE ROD WITH NUT.*
- D) BACK ANCHOR PLATE 3" x 3" x 3/16" COLD ROLLED STEEL - TAPPED FOR AND INCLUDING 3/8-16 STUD AND NUT.*
- E) FINISHED WALL THICKNESS (TO BE FURNISHED IF OVER 3/4").
- F) MASONRY WALL (THICKNESS TO BE FURNISHED).

* INCLUDED WITH MOUNTING KIT 899-016.

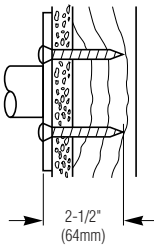


Exposed Mounting Kits

Stud walls with wood supports

□ 899-020

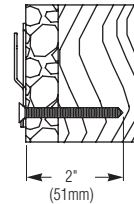
MATERIAL INCLUDED
2 - #14 x 2½" STAINLESS
STEEL PHILLIPS OVAL HEAD
SHEET METAL SCREWS



Stud walls

□ 899-026

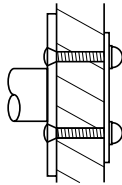
(CONCEALED OR EXPOSED)
MATERIAL INCLUDED
4 - #10 x 2"
ZINC PLATED
FLAT HEAD
WOOD SCREW
NOTE: FOR MIRROR MOUNTING
ONLY.
(1) PER H-HANGER



Partition walls

□ 899-021

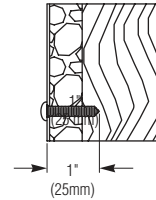
MATERIAL INCLUDED
A) 2 - ¼-20 x 1½"
STAINLESS STEEL
PHILLIPS OVAL HEAD
MACHINE SCREWS
B) 2 CAP NUTS
C) 1 BACKING PLATE



Stud walls

□ 899-027

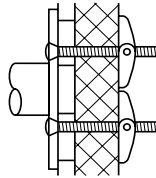
(CONCEALED OR EXPOSED)
MATERIAL INCLUDED
4 - #10 x 1"
ZINC PLATED
PAN HEAD
WOOD SCREW



Panel walls

□ 899-022

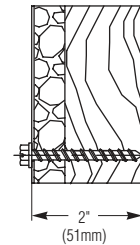
MATERIAL INCLUDED
A) 2 - ¼-20 x 3"
STAINLESS STEEL
PHILLIPS OVAL HEAD
MACHINE SCREWS
B) 2 TOGGLE NUTS



Stud walls

□ 899-028

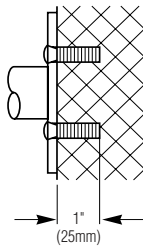
(EXPOSED MOUNTING)
7 - SLOTTED HEX WASHER HEAD
¼" x 2" LONG
18-8 STAINLESS STEEL
SHEET METAL



Masonry walls

□ 899-023

MATERIAL INCLUDED
A) 2 - ¼-20 x 1"
STAINLESS STEEL
PHILLIPS OVAL HEAD
MACHINE SCREWS
B) 2 - ¼-20 LEAD
ANCHORS



Stud walls

□ 899-029

(EXPOSED MOUNTING)
10 - SLOTTED HEX WASHER HEAD
¼" x 2" LONG
18-8 STAINLESS STEEL
SHEET METAL

