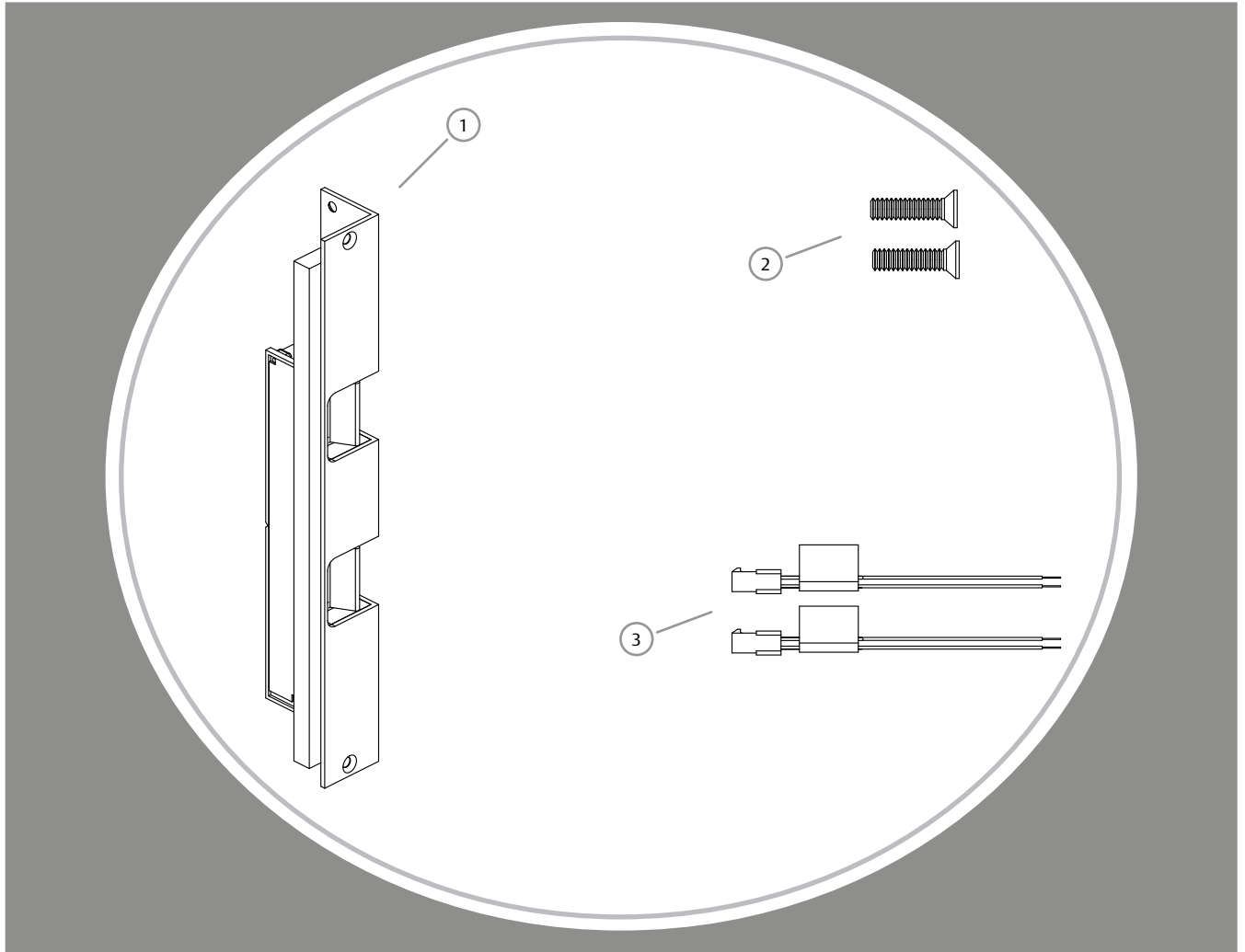


Product Components

- ① Electric Strike Body & Faceplate ② #12-24 x 1/2" Mounting Screws ③ Plug In Connectors*

*Only 1 Plug In Connector is used with 310-6-30



Electrical Specifications

| ELECTRICAL RATINGS FOR SOLENOID* | | |
|---|-------|-------|
| CONTINUOUS DUTY | 12VDC | 24VDC |
| Resistance in Ohms | 23.5 | 96 |
| Amps | .51 | .25 |
| Solenoids are rated at +/- 10% indicated value. *Resistance value indicated above is per coil. | | |

| MINIMUM WIRE GAUGE REQUIREMENTS | | |
|---------------------------------|----------|----------|
| SOLENOID VOLTAGE | 12VDC | 24VDC |
| 200 feet or less | 18 gauge | 18 gauge |
| 200 - 300 feet | 16 gauge | 18 gauge |
| 300 - 400 feet | 14 gauge | 16 gauge |

Installation Directions

CAUTION! Before connecting any device at the installation site, verify input voltage using a multimeter. Many power supplies and low voltage transformers operate at higher levels than listed. Any input voltage exceeding 10% of the solenoid rating may cause severe damage to the unit and will void the warranty.

Prepare Strike

1. If using the LCBMA (Latchbolt monitor & Locking Cam Monitor), see Diagram 1 for wiring instructions.
2. The strike body ships as either a 12 or 24 volt unit and is not field selectable. Verify the available voltage is +/- 10% of the rated voltage of the strike body.

Prepare Frame

3. Prepare frame using the template for your strike located on pages 3-7.

Finish Installing

4. Connect the Plug In Connector to the electric strike, and connect wires from the Plug In Connector leads to the power source.
5. Install the electric strike unit in jamb cutout, using the #12-24 x 1/2" mounting screws.

Diagram 1: Monitoring Switches

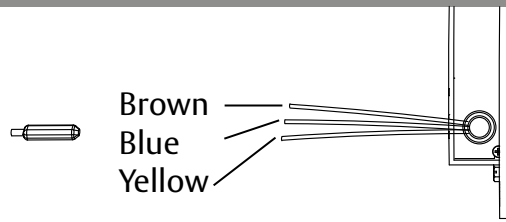
Latchbolt Monitor (LBM)

| | |
|--------|-----------------|
| White | Common |
| Orange | Normally Open |
| Green | Normally Closed |

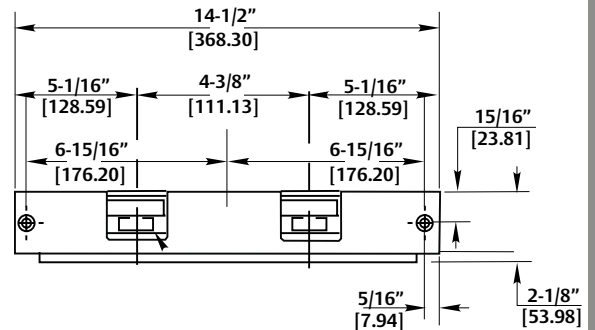
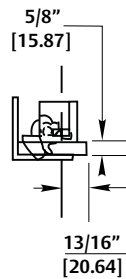
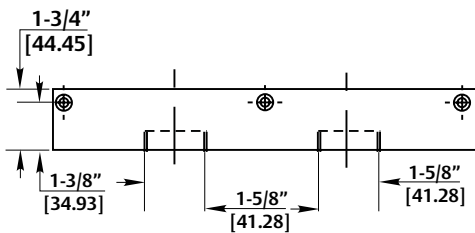
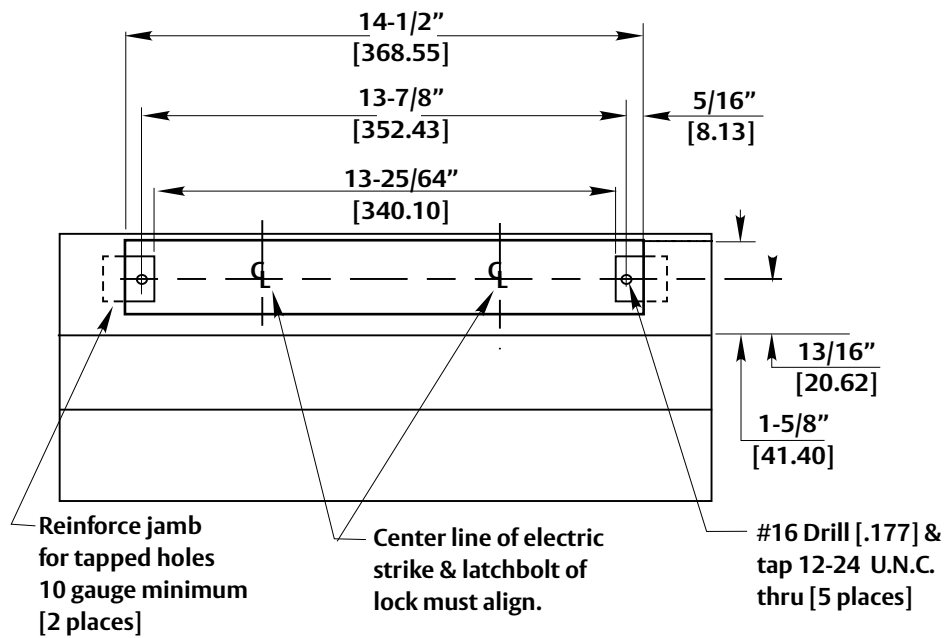
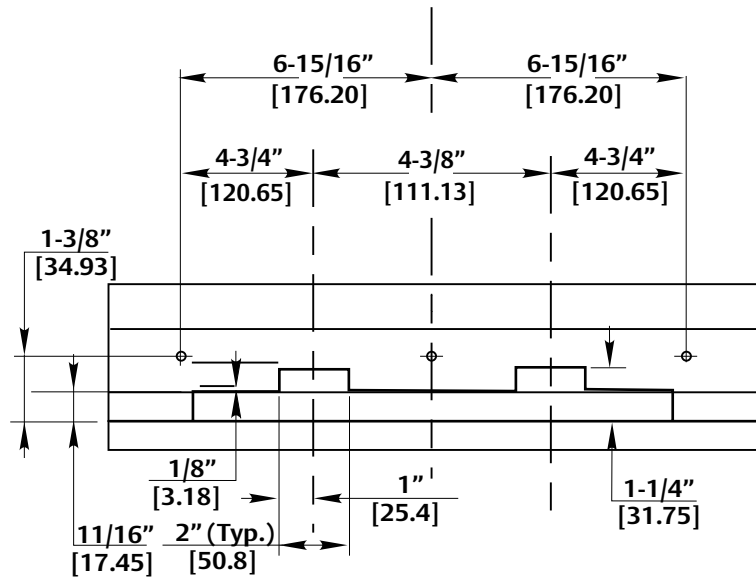


Locking Cam Monitor (LCM)

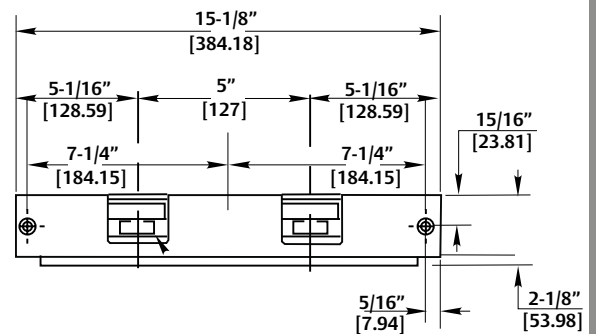
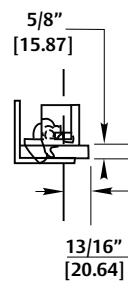
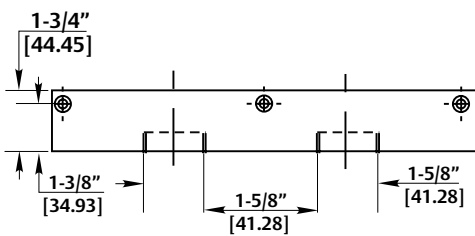
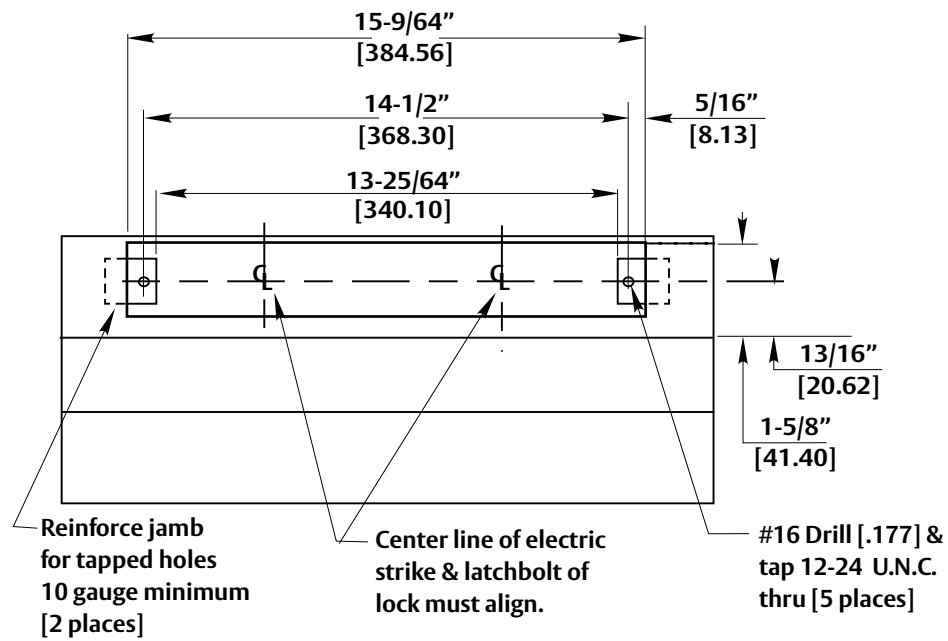
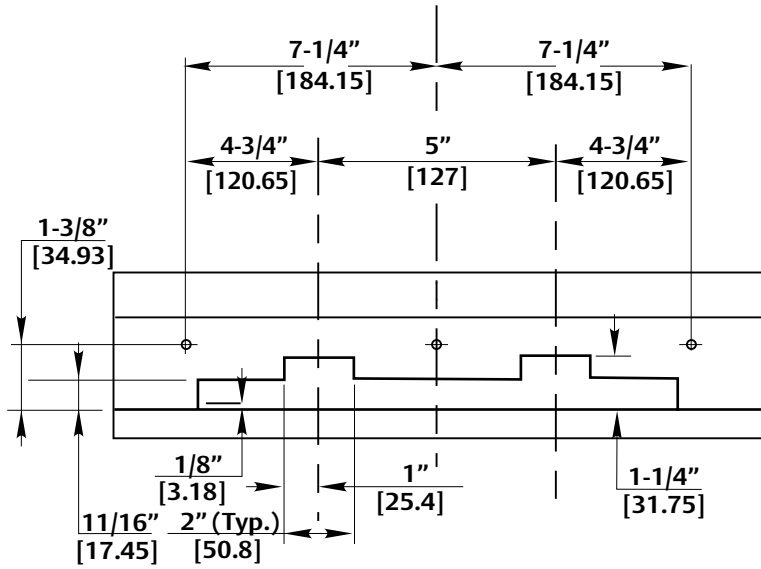
| | |
|--------|-----------------|
| Brown | Common |
| Blue | Normally Open |
| Yellow | Normally Closed |



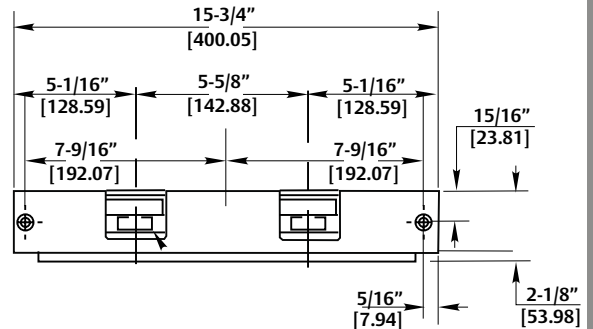
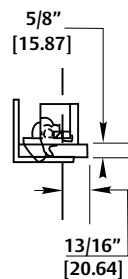
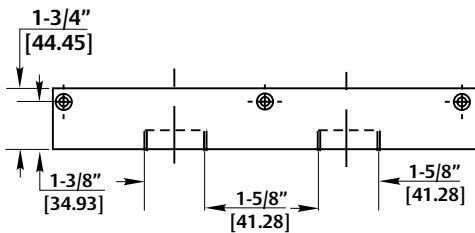
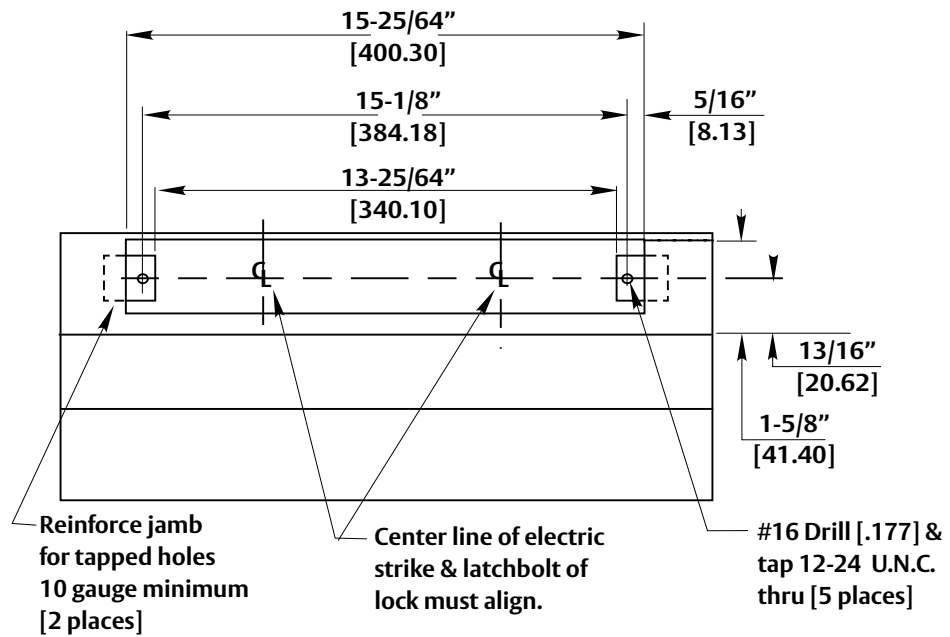
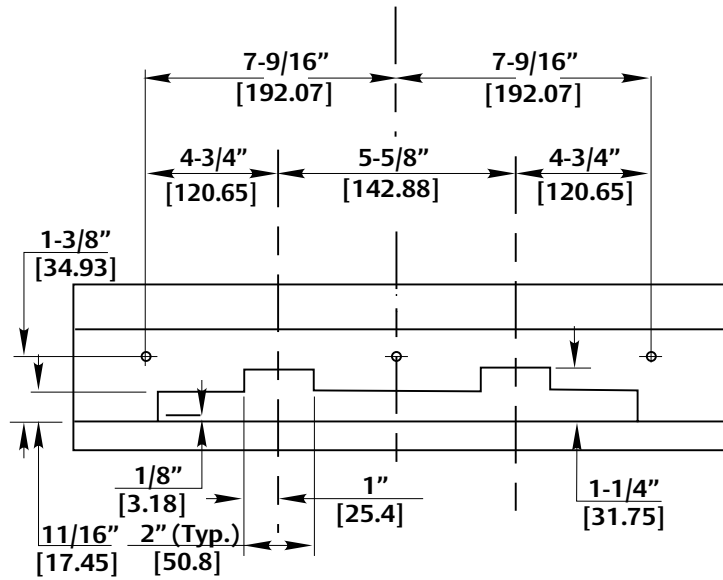
310-6-1 Template & Dimensions



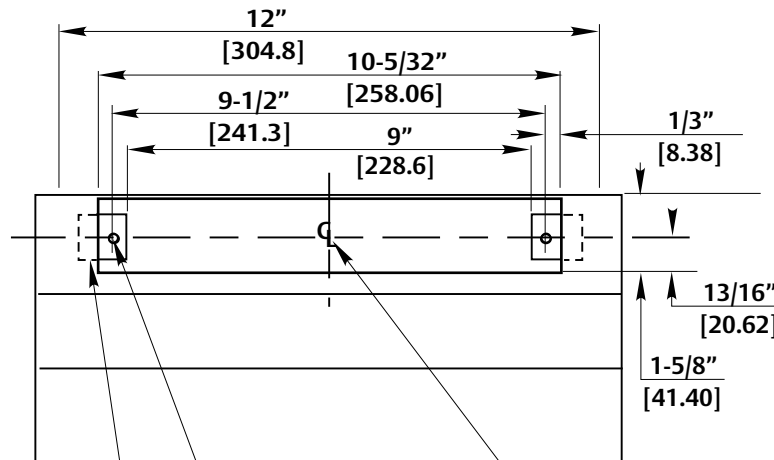
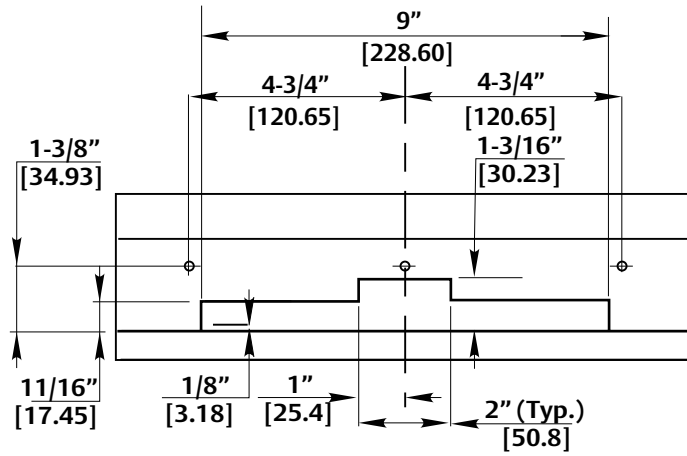
310-6-2 Template & Dimensions



310-6-3 Template & Dimensions



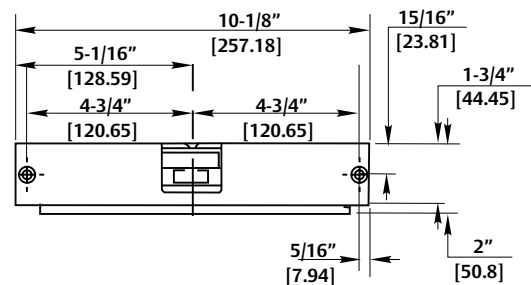
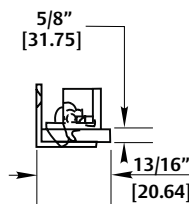
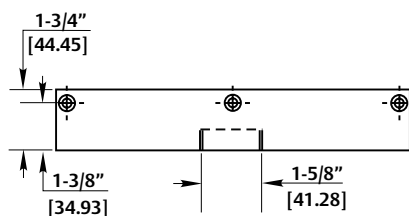
310-6-8 Template & Dimensions



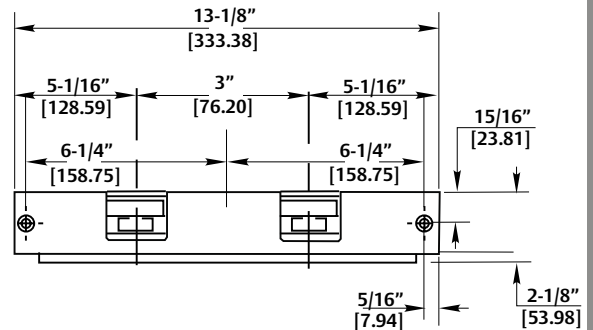
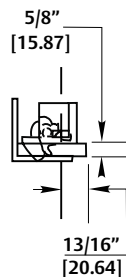
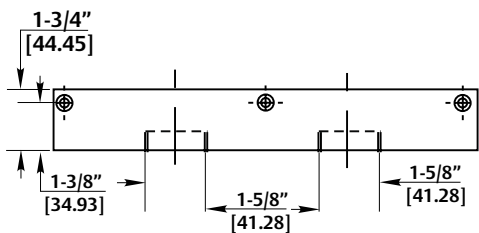
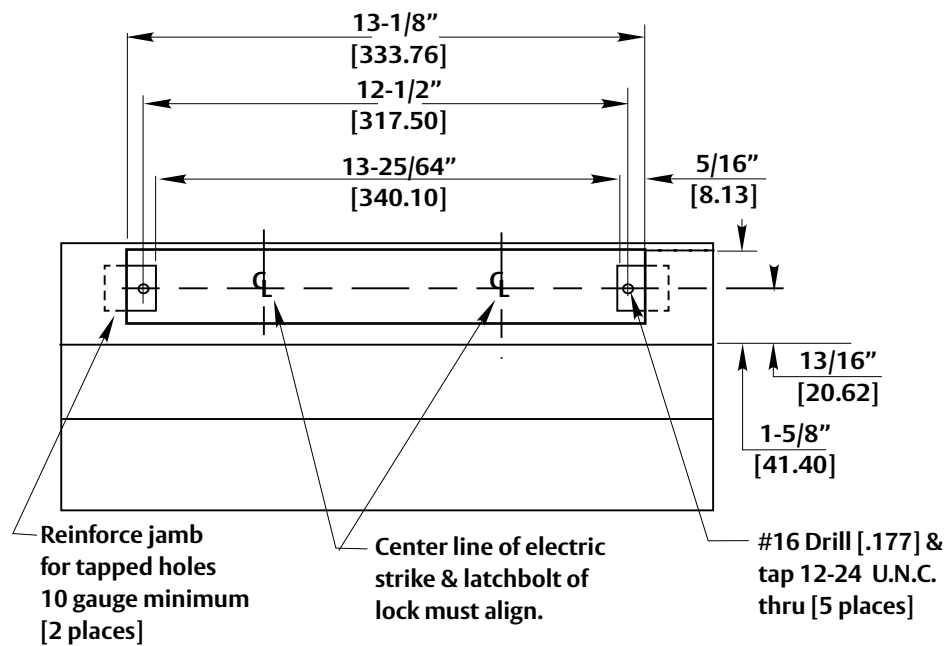
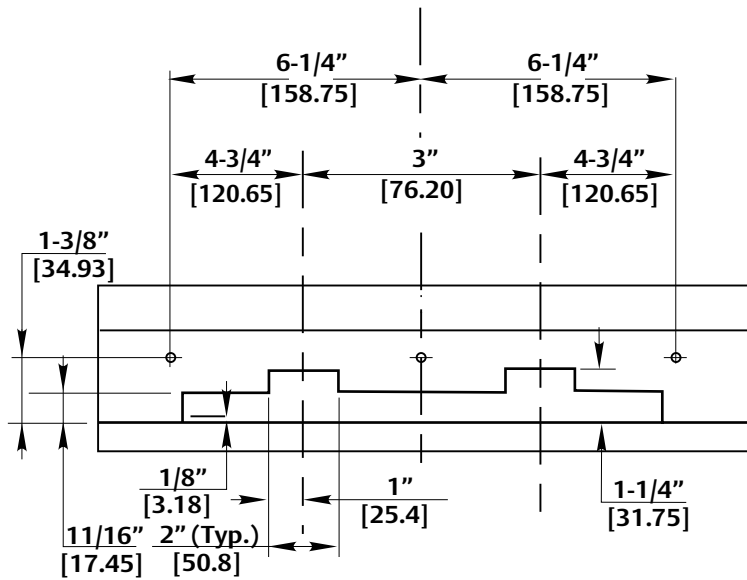
#16 Drill [.177] & tap 12-24 U.N.C. thru [5 places]

Center line of electric strike & latchbolt of lock must align.

Reinforce jamb for tapped holes 10 gauge minimum [2 places]



310-6-30 Template & Dimensions



**This page intentionally
left blank.**