



ASSA ABLOY, the global leader in door opening solutions

# Full Surface Reinforcing Pivots

## A practical way to ensure longer door life

This full-surface reinforcing pivot adds years of life to openings where the hinges or hinge reinforcements have failed. An economical way to solve door sag problems, reinforcing pivots take the load off the top hinge and transfer it to screws that will not pull out.

### Applications

- Schools
- Healthcare
- Public Buildings

### Technical Specifications:

**Hinge Type:**

Full Surface Reinforcing Pivots for Flush Doors

**Material:**

Heavy Duty 3/16" (.187) Cold-Rolled Steel

**Finishes:**

Zinc Plated (US2G)

**Mounting Hardware:**

- 8 ea. 1/4-20 x 3/4" Phillips flat head machine screws
- 8 ea. #14 x 1 1/4" Phillips flat head sheet metal screws
- 2 ea. 1/4-20 x 1 3/4" Sleeve bolts

**Capacity:**

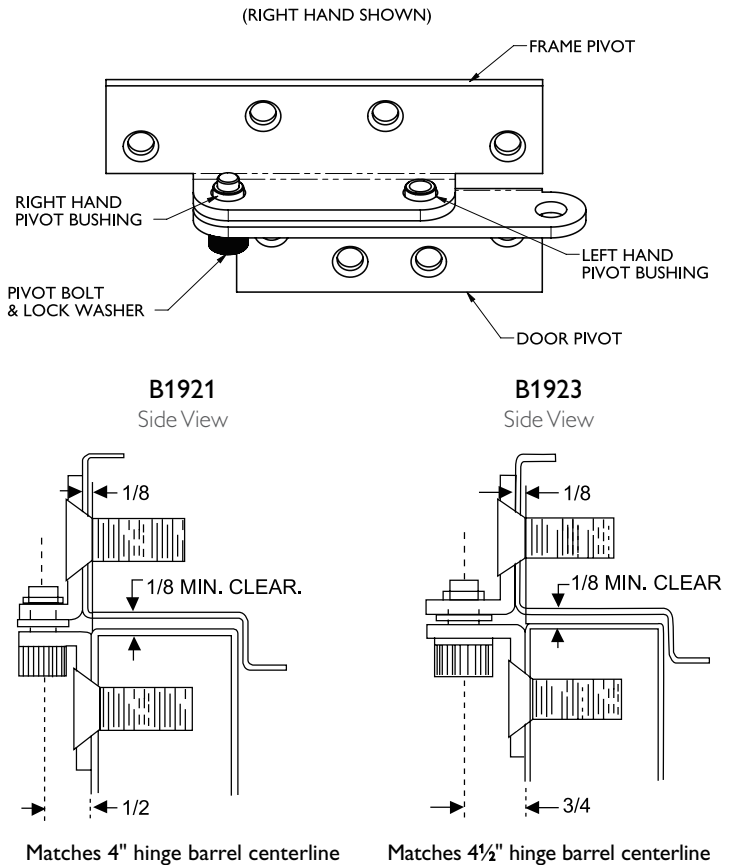
Supports Weights up to 300 lbs.

**Hole Pattern:**

Symmetrically

**Handing:**

Non-handed



<b>B1921</b>	The B1921 pivot is designed with a 1/2" offset to match the pivot point of a 4" wide butt hinge.
<b>B1923</b>	The B1923 pivot is designed with a 3/4" offset to match the pivot point of a 4 1/2" wide butt hinge.

MEMPHIS, TN USA  
P.O. Box 18966  
Memphis, TN 38181  
phone: 800 824-3018  
fax: 800 243-3656

VENTURA, CA USA  
P.O. Box 3780  
Ventura, CA 93006  
phone: 800 283-9988  
fax: 800 283-4050

VANCOUVER, BC CANADA  
103-2480 Mt. Lehman Road  
Abbotsford, BC V2T 6W3  
phone: 877 535-7888  
fax: 877 535-7444

TORONTO, ON CANADA  
160 Four Valley Dr.  
Vaughan, ON L4K 4T9  
phone: 877 535-7888  
fax: 866 243-9817

**Markar Architectural Products**  
information@markar.com  
www.markar.com