

## Two Knuckle Standard Weight Series

Recommended for standard weight, medium frequency doors, or doors with closing devices.

- Full mortise bearing hinges are commonly used for the flush door/frame/wall application
- Two knuckle design has a clean finished look
- Specify right or left hand when ordering
- Decorative tips are available
- For available finishes see page 29

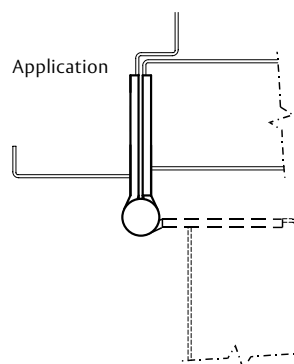
TA3331  
TA2731



No.	ANSI Cross Reference	Base Material	Weight
TA3331	A5112	Stainless	STD
TA2731	A8112	Steel	STD

### Specifications

Inches	mm	Gauge	No. of Holes	Fasteners	
				Machine	Wood
3 1/2" x 3 1/2"	88.9 x 88.9	.123	6	1/2 x 10-24	1 x 10
4" x 4"	101.6 x 101.6	.130	8	1/2 x 12-24	1 1/4 x 12
4 1/2" x 4"	114.3 x 101.6	.134	8	1/2 x 12-24	1 1/4 x 12
4 1/2" x 4 1/2"	114.3 x 114.3	.134	8	1/2 x 12-24	1 1/4 x 12
5" x 4 1/2"	127 x 114.3	.146	8	1/2 x 12-24	1 1/4 x 12
5" x 5"	127 x 127	.146	8	1/2 x 12-24	1 1/4 x 12



### Options:

Code	Description
<b>NRD</b>	Non-Removable Door – one set screwed hinge furnished per set
<b>RC</b>	Round Corner – 1/4" radius furnished unless specified otherwise
<b>SSF</b>	Safety Stud Feature
<b>MM</b>	Magnetic Monitoring
<b>QC</b>	ElectroLynx® hinge 2,4,6 or 8 wire available
<b>CC</b>	Concealed Circuit 2,4,6 or 8 wire available

### Decorative Tip Options (TA2731 only)

<b>FT</b>	Flat Tip
<b>RT</b>	Round Tip
<b>GT</b>	Grooved Tip
<b>LT</b>	Lined Tip

Note: Not available on 3 1/2" x 3 1/2" hinges



800-346-7707 | [www.mckinneyhinge.com](http://www.mckinneyhinge.com)  
Check the web site for the up-to-date catalog

McKinney is a brand associated with Corbin Russwin, Inc., an ASSA ABLOY Group company. Copyright © 2012-2017, Corbin Russwin, Inc. All rights reserved. Reproduction in whole or in part without the express written permission of Corbin Russwin, Inc. is prohibited.

**ASSA ABLOY**

The global leader in  
door opening solutions