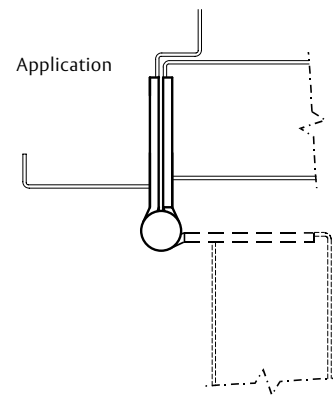


## Standard Weight Spring Hinge Set

Recommended for standard weight, medium frequency doors in place of door closers in apartments, hotels, motels, office buildings, etc.

- Spring hinges are an alternative to door closing devices. Generally two hinges on the door must be spring hinges to provide adequate closing force. NFPA requires a minimum of two (2) spring hinges on labeled doors
- All 1522 sets of standard weight single acting spring hinges are furnished with two 1502 and one 1500 (spring-less) hinge.
- The two spring hinges should be located as the top and center hinge. The “dummy” or spring-less hinge should be located as the bottom hinge
- This non-handed spring hinge series is adjustable and tension can be added or reduced by means of a hex key that is provided.
- Locking screw provides tamper-resistance after the proper tension has been set. For unparalleled tamper resistance and security choose the TRS option
- Caution: Use of gasketing for smoke or sound protection, wind conditions or unbalanced air pressure, twisted or misaligned frames or doors, door bottoms, improper latch adjustment may prevent doors from latching. Additional spring hinges may be required.
- For available finishes see page 29

1522



No.	ANSI Cross Reference	Base Material	Weight
1522	K81081	Steel	STD
1522	K81081F	Steel	STD

### Specifications

Inches	mm	Gauge	No. of Holes	Fasteners	
				Machine	Wood
4½" x 4"	114.3 x 101.6	.134	8	½ x 12-24	1¼ x 12
4½" x 4½"	114.3 x 114.3	.134	8	½ x 12-24	1¼ x 12

### Options:

Code	Description
RC	Round corner – ¼" radius furnished unless specified otherwise
HT	Hospital Tip – on one side only*
MM	Magnetic Monitoring
TRS	Tamper Resistant Option**

\* Voids the UL® listing.

\*\* A tamper resistant screw is screwed into the tension ratchet after the proper tension has been set.

## ASSA ABLOY

SH-2 The global leader in door opening solutions

800-346-7707 | [www.mckinneyhinge.com](http://www.mckinneyhinge.com)  
Check the web site for the up-to-date catalog

McKinney is a brand associated with Corbin Russwin, Inc., an ASSA ABLOY Group company. Copyright © 2012-2017, Corbin Russwin, Inc. All rights reserved. Reproduction in whole or in part without the express written permission of Corbin Russwin, Inc. is prohibited.