

Effective Date: November 2003

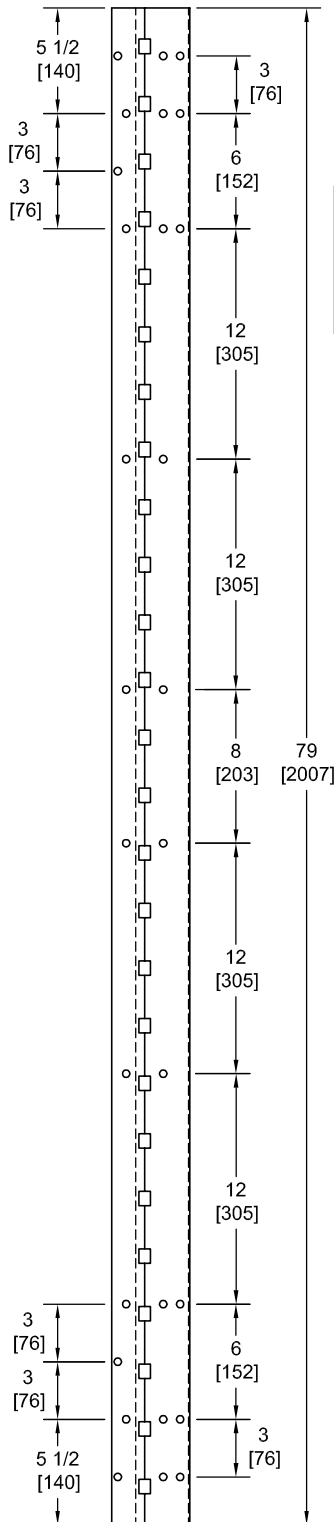
SPFM79-HD

TEMPLATE FULL MORTISE CONTINUOUS GEARED ALUMINUM HINGE



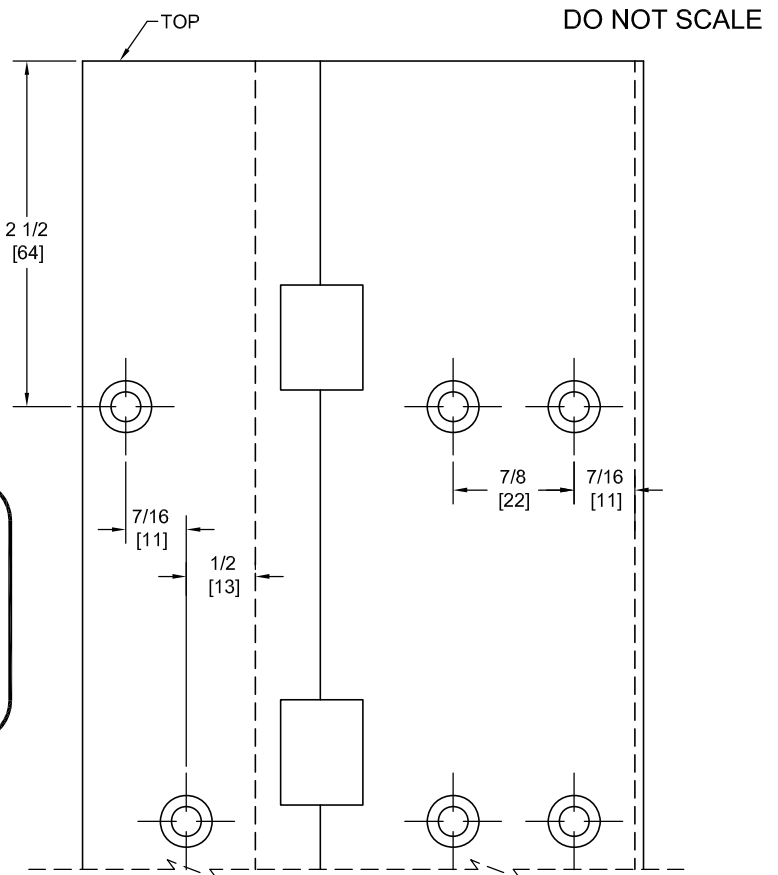
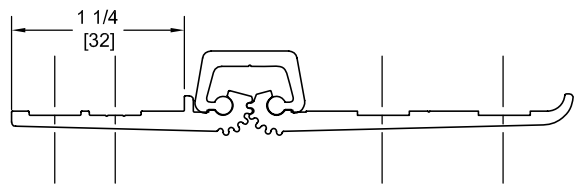
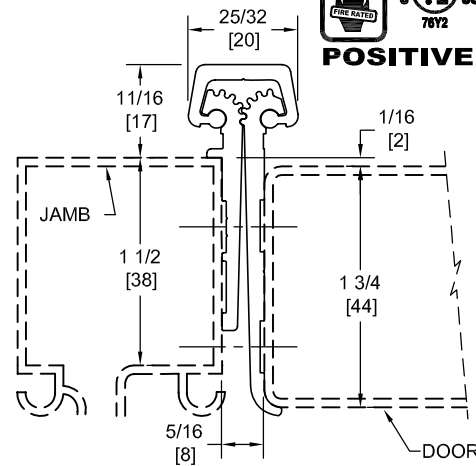
Fire Rated
Classified & Listed to meet the requirements of Standards UL10B, UL10C, UBC7-2, Part I & BS476

POSITIVE PRESSURE



**SPECIAL ORDER:
79" HOLE PATTERN**

Minimum of 50 Units/Order Is Required For This Hole Pattern. Lessor Quantity Will Be Cut Down From 83" Hinges. Refer to 83" Cut Down Instruction.



**** CAUTION ****
Due To Frame Installation Variations, Pre-drilling For Fasteners Is Not Recommended

PEMKO Template Full Mortise Continuous Geared Aluminum Hinges CSPFM79-HD/DSPFM79-HD are made to conform to this drawing. PEMKO CSPFM79-HD/DSPFM79-HD hinges can be supplied with Electric Functions - See Electrical Application Section. Machine Screw Size - No. 12-24 x 7/16 FHUC Thread-forming. PEMKO Continuous Geared Aluminum Hinges are Listed for fire applications up to 90 minutes without special preparation.

Concealed Circuit (CC) Application

SEE ELECTRICAL APPLICATION SECTION
IN TECHNICAL MANUAL

Magnetic Monitor (MM) Application

SEE ELECTRICAL APPLICATION SECTION
IN TECHNICAL MANUAL

Effective Date: November 2003

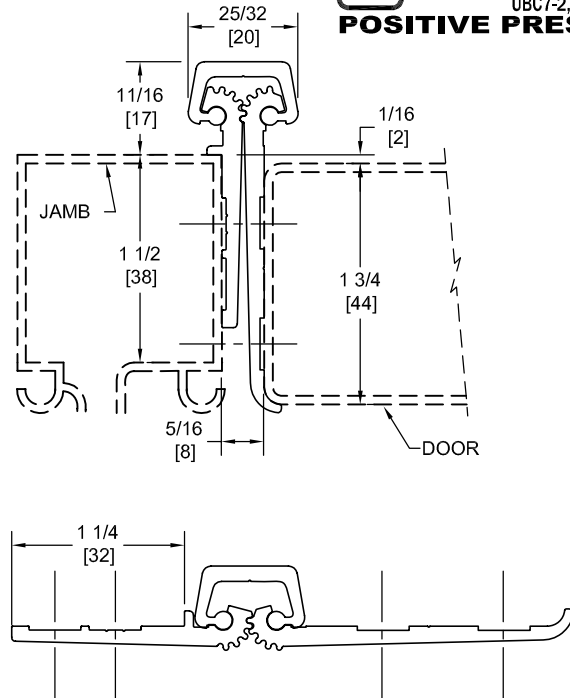
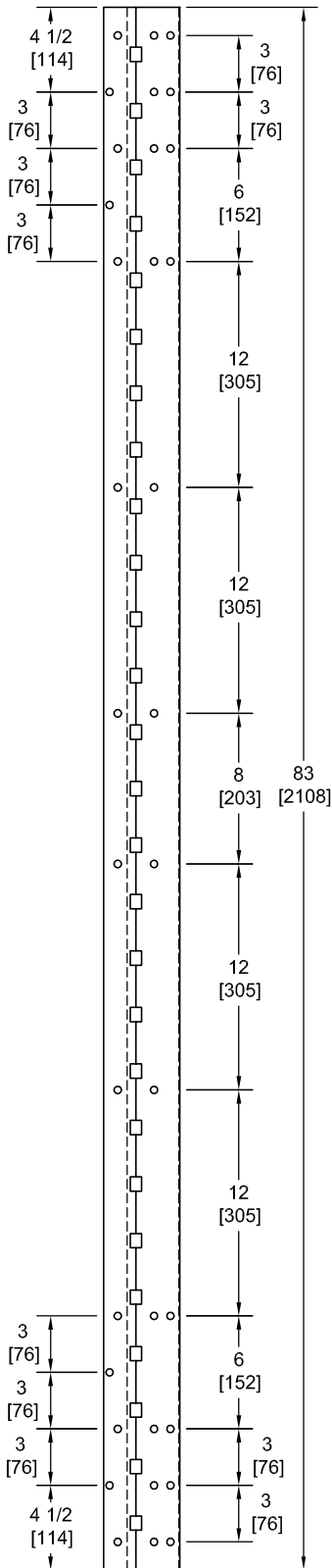
SPFM83-HD

TEMPLATE FULL MORTISE CONTINUOUS GEARED ALUMINUM HINGE



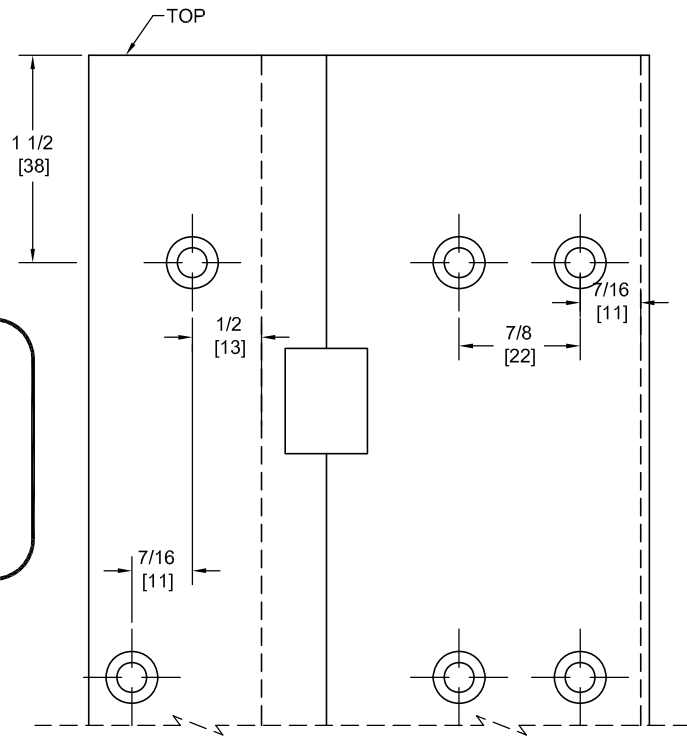
Fire Rated
Classified & Listed to
meet the requirements of
Standards UL10B, UL10C,
UBC7-2, Part I & BS476

POSITIVE PRESSURE



DO NOT SCALE

**** CAUTION ****
Due To Frame
Installation
Variations,
Pre-drilling
For Fasteners
Is Not
Recommended



PEMKO Template Full Mortise Continuous Geared Aluminum Hinges CSPFM83-HD/DSPFM83-HD are made to conform to this drawing. PEMKO CSPFM83-HD/DSPFM83-HD hinges can be supplied with Electric Functions - See Electrical Application Section. Machine Screw Size - No. 12-24 x 7/16 FHUC Thread-forming. PEMKO Continuous Geared Aluminum Hinges are Listed for fire applications up to 90 minutes without special preparation.

Concealed Circuit (CC) Application

SEE ELECTRICAL APPLICATION SECTION
IN TECHNICAL MANUAL

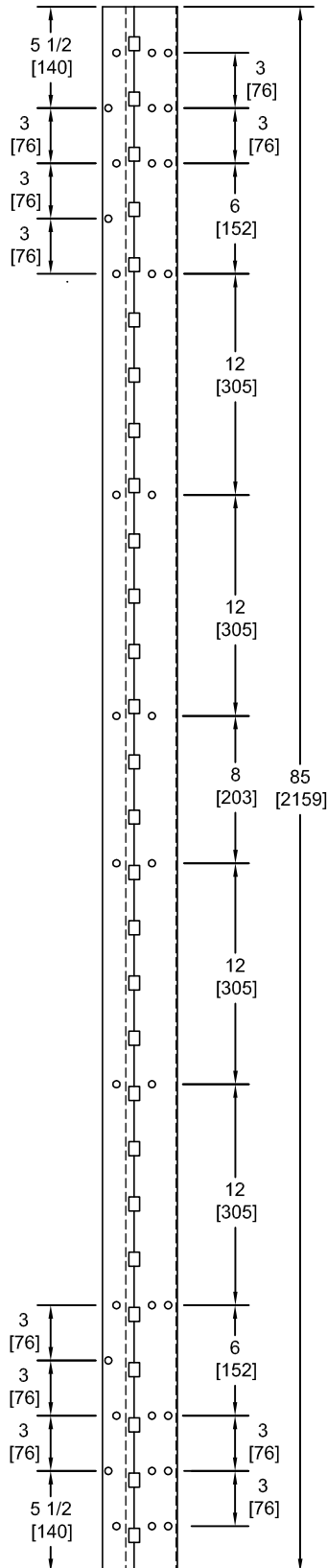
Magnetic Monitor (MM) Application

SEE ELECTRICAL APPLICATION SECTION
IN TECHNICAL MANUAL

Effective Date: November 2003

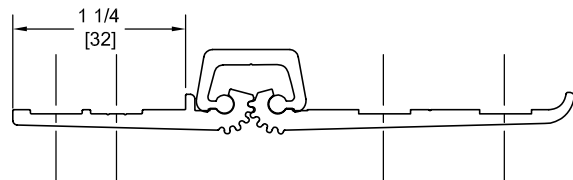
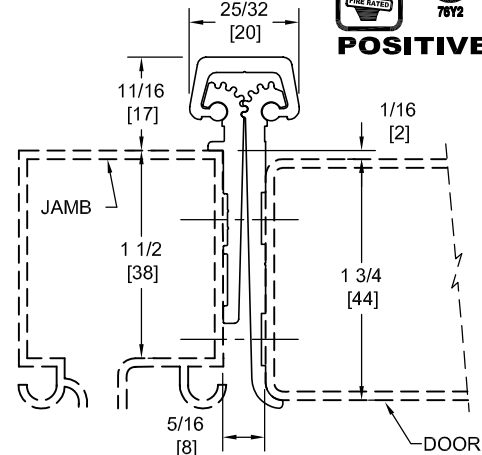
SPFM85-HD

TEMPLATE FULL MORTISE CONTINUOUS GEARED ALUMINUM HINGE



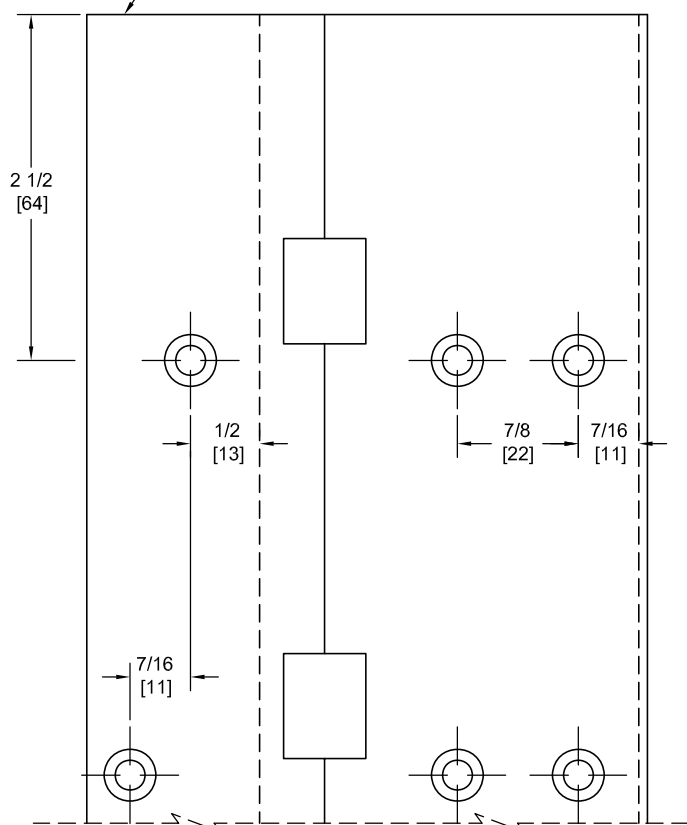
Fire Rated
Classified & Listed to meet the requirements of Standards UL10B, UL10C, UBC7-2, Part I & BS476

POSITIVE PRESSURE



DO NOT SCALE

**** CAUTION ****
Due To Frame Installation Variations, Pre-drilling For Fasteners Is Not Recommended



PEMKO Template Full Mortise Continuous Geared Aluminum Hinges CSPFM85-HD/DSPFM85-HD are made to conform to this drawing. PEMKO CSPFM85-HD/DSPFM85-HD hinges can be supplied with Electric Functions - See Electrical Application Section. Machine Screw Size - No. 12-24 x 7/16 FHUC Thread-forming. PEMKO Continuous Geared Aluminum Hinges are Listed for fire applications up to 90 minutes without special preparation.

Manufacturer reserves the right to make changes without formal notice.

Concealed Circuit (CC) Application

SEE ELECTRICAL APPLICATION SECTION
IN TECHNICAL MANUAL

Magnetic Monitor (MM) Application

SEE ELECTRICAL APPLICATION SECTION
IN TECHNICAL MANUAL

Effective Date: November 2003

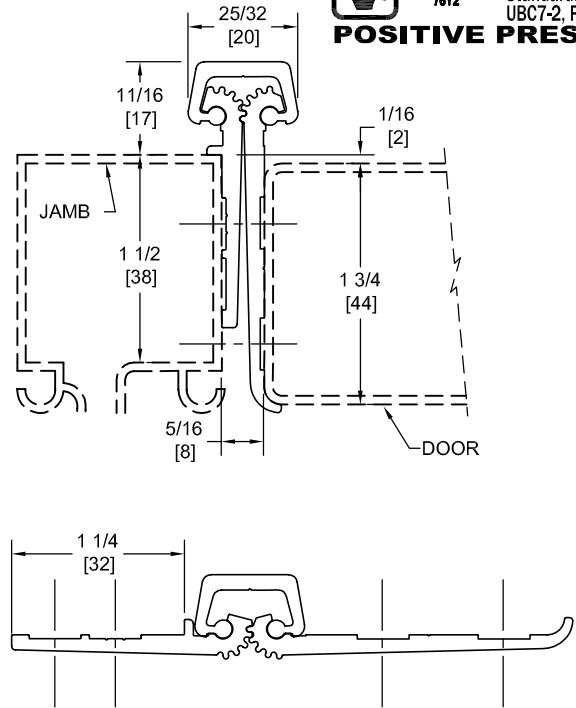
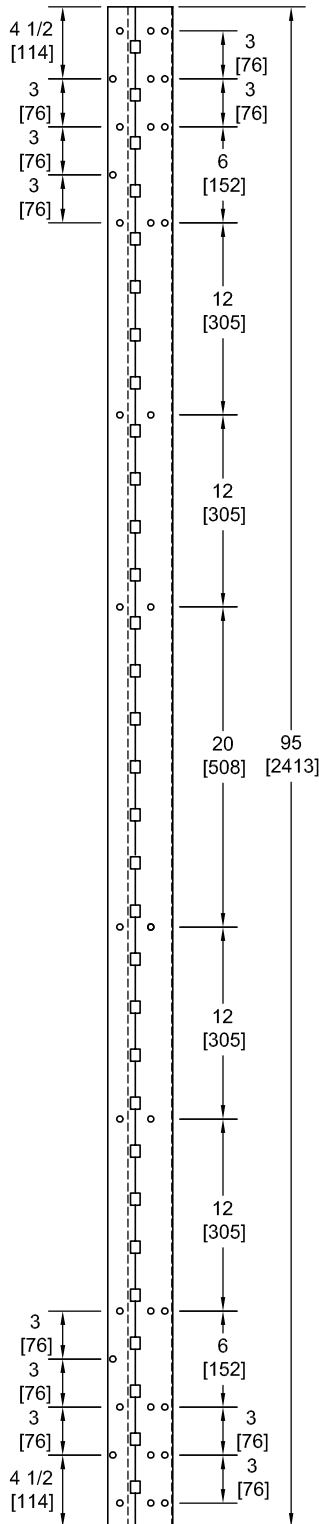
SPFM95-HD

TEMPLATE FULL MORTISE CONTINUOUS GEARED ALUMINUM HINGE



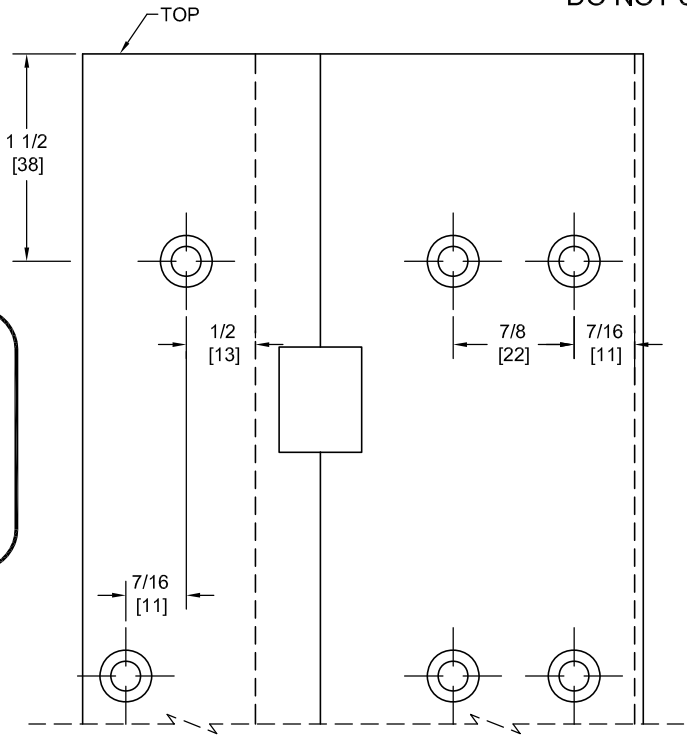
Fire Rated
Classified & Listed to meet the requirements of Standards UL10B, UL10C, UBC7-2, Part I & BS476

POSITIVE PRESSURE



DO NOT SCALE

**** CAUTION ****
Due To Frame
Installation
Variations,
Pre-drilling
For Fasteners
Is Not
Recommended



PEMKO Template Full Mortise Continuous Geared Aluminum Hinges CSPFM95-HD/DSPFM95-HD are made to conform to this drawing. PEMKO CSPFM95-HD/DSPFM95-HD hinges can be supplied with Electric Functions - See Electrical Application Section. Machine Screw Size - No. 12-24 x 7/16 FHUC Thread-forming. PEMKO Continuous Geared Aluminum Hinges are Listed for fire applications up to 90 minutes without special preparation.

Concealed Circuit (CC) Application

SEE ELECTRICAL APPLICATION SECTION
IN TECHNICAL MANUAL

Magnetic Monitor (MM) Application

SEE ELECTRICAL APPLICATION SECTION
IN TECHNICAL MANUAL

Effective Date: November 2003

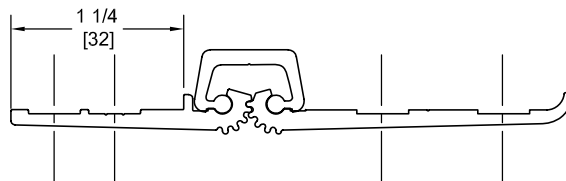
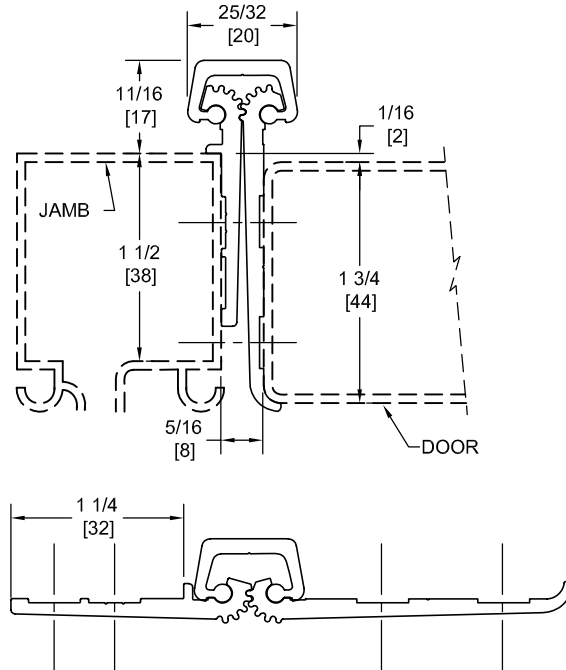
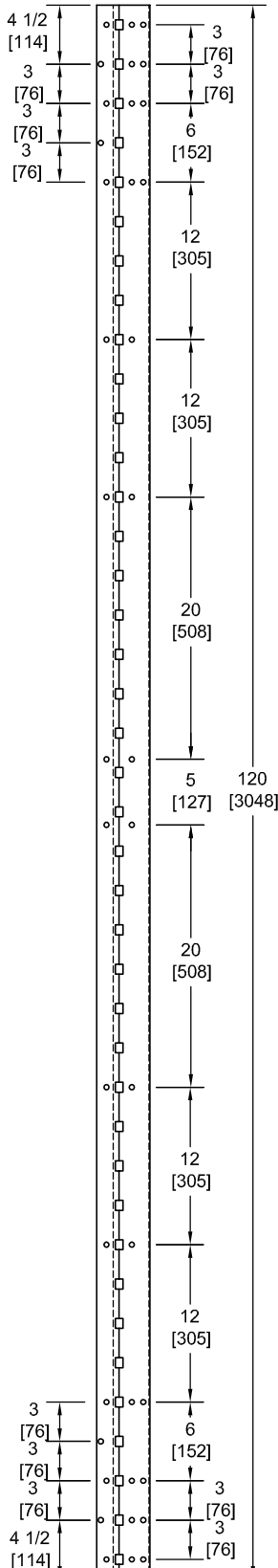
SPFM120-HD

TEMPLATE FULL SURFACE CONTINUOUS GEARED ALUMINUM HINGE

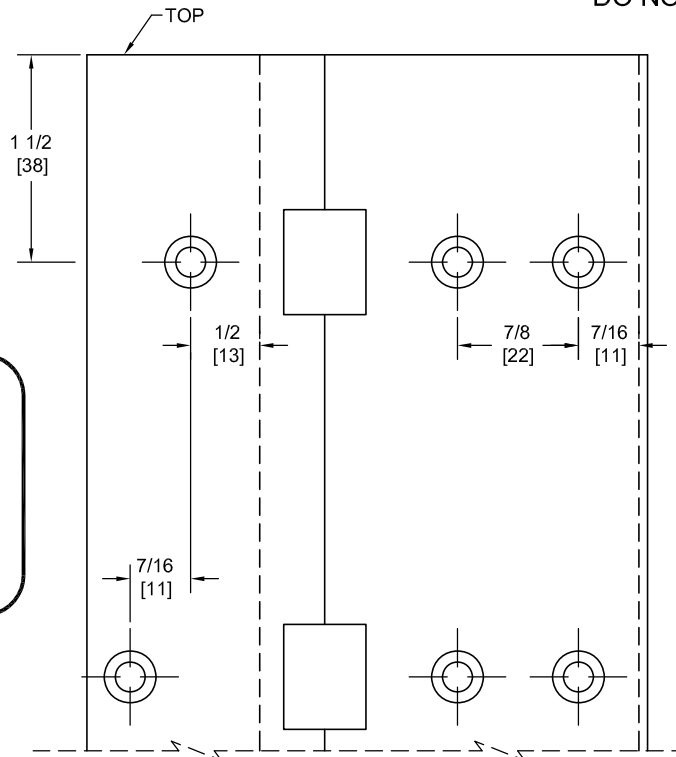


Fire Rated
Classified & Listed to meet the requirements of Standards UL10B, UL10C, UBC7-2, Part I & BS476

POSITIVE PRESSURE



DO NOT SCALE



**** CAUTION ****
Due To Frame Installation Variations, Pre-drilling For Fasteners Is Not Recommended

PEMKO Template Full Mortise Continuous Geared Aluminum Hinges CSPFM120-HD/DSPFM120-HD are made to conform to this drawing. PEMKO CSPFM120-HD/DSPFM120-HD hinges can be supplied with Electric Functions - See Electrical Application Section. Machine Screw Size - No. 12-24 x 7/16 FHUC Thread-forming. PEMKO Continuous Geared Aluminum Hinges are Listed for fire applications up to 90 minutes without special preparation.

Concealed Circuit (CC) Application

SEE ELECTRICAL APPLICATION SECTION
IN TECHNICAL MANUAL

Magnetic Monitor (MM) Application

SEE ELECTRICAL APPLICATION SECTION
IN TECHNICAL MANUAL