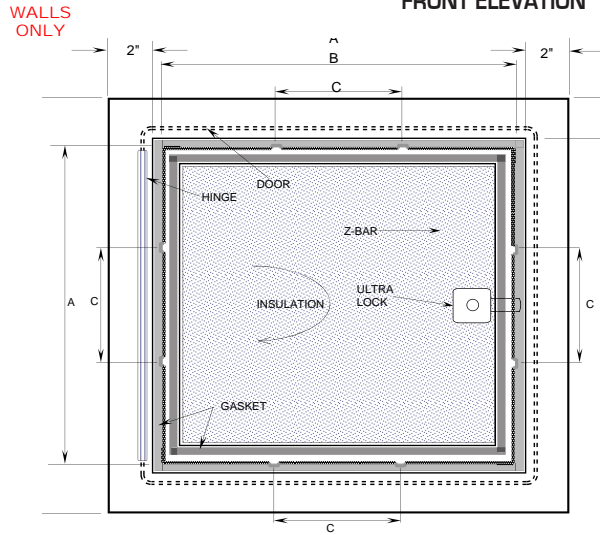


**SUBMITTAL SHEET**

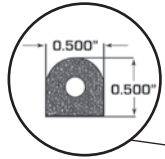


**SPECIFICATIONS:**

- Door:** 16 ga. steel
- Trim:** 16 ga. steel
- Finish:** Zinc dipped primed baked grey enamel
- Latches:** Ultra paddle latch lock and slam catch with 151 keycode and interior latch release
- Hinges:** Continuous piano hinge
- Insulation:** Double layer of 1" GreenGuard® Extruded Polystyrene insulation board, with R-Value @ 75°F Mean 5.0 x 2, FM approved\*
- Gasket:** Open celled microcellular polyurethane on inside of door and closed cell neoprene sponge SC42 W/PSA stripping gasket on the back of the door
- Application:** For exterior purposes, weather resistive

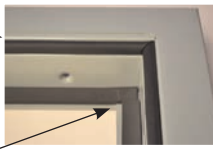
**OPTIONS (at additional cost)**

- Special sizes available
- \_\_\_\_\_



*Microcellular polyurethane gasket*

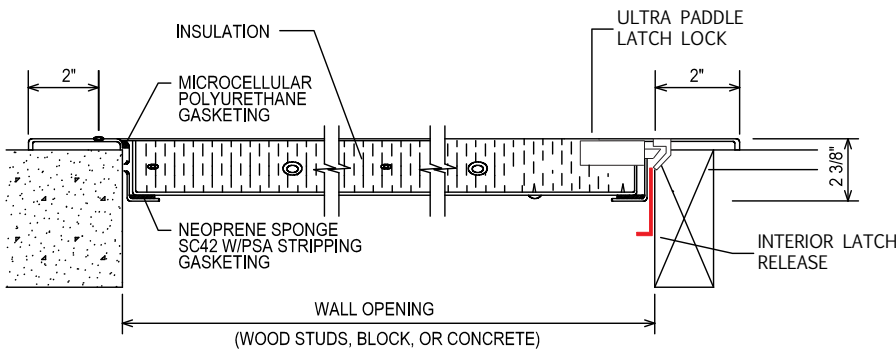
*Neoprene sponge SC42 W/PSA stripping gasket applied on back inside edge*



Ultra Paddle Latch Lock w/ 151 key



**SECTION DETAIL**



✓	Item No.	Door Size W x H	Wall Opening *	Ship Wt. Lbs.
	EXT 1350	12 x 12	12 1/4 x 12 1/4	27
	EXT 1350	14 x 14	14 1/4 x 14 1/4	30
	EXT 1350	16 x 16	16 1/4 x 16 1/4	35
	EXT 1350	18 x 18	18 1/4 x 18 1/4	40
	EXT 1350	22 x 30	22 1/4 x 30 1/4	45
	EXT 1350	22 x 36	22 1/4 x 36 1/4	50
	EXT 1350	24 x 24	24 1/4 x 24 1/4	55
	EXT 1350	24 x 36	24 1/4 x 36 1/4	67
	EXT 1350	30 x 36	30 1/4 x 36 1/4	79
	EXT 1350	36 x 36	36 1/4 x 36 1/4	90

\* For wall opening sizes see elevation drawing above.

The one of a kind exterior access door is zinc dipped, insulated with 1" GreenGuard and includes two types of gasket. Weather resistive open celled microcellular polyurethane gasket and closed cell neoprene sponge SC42 W/PSA stripping gasket on inside for outdoor applications (certain saltwater areas might not be compatible).

\* GreenGuard® Extruded Polystyrene insulation board, with R-Value @ 75°F Mean 5.0 x 2. R means resistance to heat flow. The higher the R-Value the greater the insulating power and energy saving capability. Compliance: BOCA 90-78, SBCCI 2228A, ICBO 4280, CA BHF TB 1334, MN Dept. of Energy Chapter 7640, CCMC 12722-L, Und. Lab. Inc.® See Classification Certificate A183. FM Approved.

Project: \_\_\_\_\_ Date: \_\_\_\_\_  
 Contractor: \_\_\_\_\_ Architect: \_\_\_\_\_  
 Sizes: \_\_\_\_\_ Quantity: \_\_\_\_\_ App Initials: \_\_\_\_\_

Corp Off: 1330 Progress Drive • Front Royal, VA 22630 • Phone: 1-800-255-5515 • Fax: 1-800-822-5001 www.wbdoors.com

**RELATED PRODUCTS**

**WB Exterior 1300 T-Handle Series Access Door**

