

SUBMITTAL SHEET

WALLS & CEILINGS

FRONT ELEVATION

SPECIFICATIONS:

Door: 14 ga. steel

Trim: 16 ga. steel, 3" wide expanded 24 ga. galvanized plaster flange. The space from the expanded flange to the 1/4" safety edge of the door will accommodate 3/4" of plaster

Finish: Primed grey baked enamel

Latches: Flush, stainless steel cam latch

Hinge: Concealed offset hinge on sizes up to and including 24 x 24. Semi-concealed hinge on sizes over 24 x 24

OPTIONS (at additional cost)

Finishes:

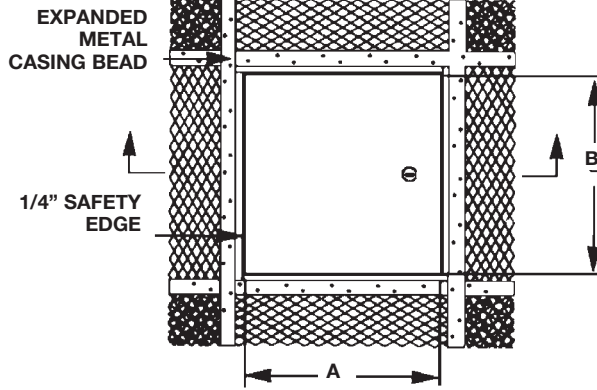
- Stainless Steel Type 304 No. 4 Satin Finish Brushed
- Stainless Steel Type 316 No. 4 Satin Finish Brushed

Options: (additional cost)

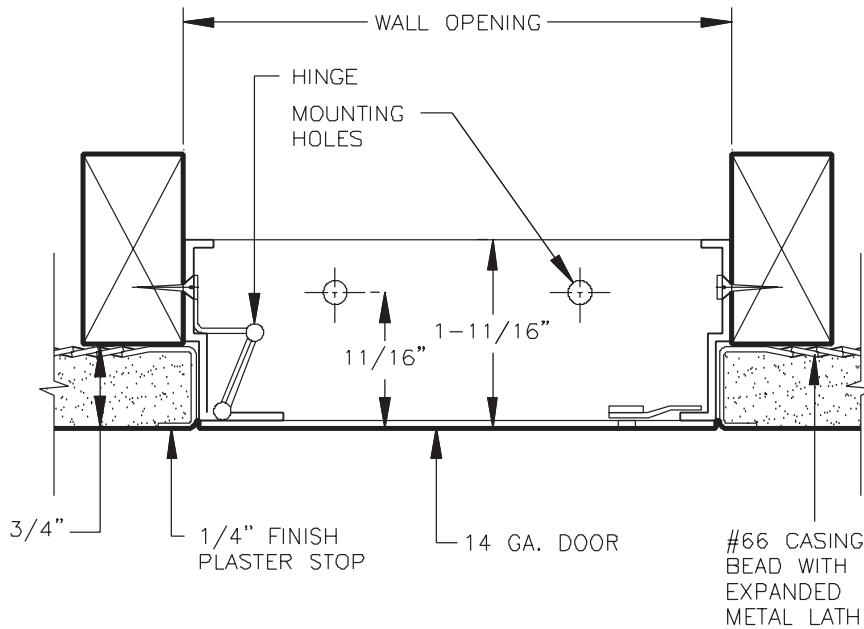
- WB 151 Key Code Cylinder locks-keyed alike with 2 keys per lock
- Weather resistive neoprene gasket all 3 sides [Closed cell sponge, blend of Neoprene/EPDM/SBR. Meets ASTM D-1056: SCE 41, RE 41, 2A1; substrate UL 94HF-1 recognized]
- Special sizes available
- _____



Fully concealed offset hinges up to 24 x 24



SECTION DETAIL



Item No.	Door Size W x H	Wall Opening	Cam Latch	Ship Wt. Lbs.
PL 500	8 x 8	8 1/4 x 8 1/4	1	4
PL 500	10 x 10	10 1/4 x 10 1/4	1	5
PL 500	12 x 12	12 1/4 x 12 1/4	1	7
PL 500	14 x 14	14 1/4 x 14 1/4	3	10
PL 500	16 x 16	16 1/4 x 16 1/4	3	12
PL 500	18 x 18	18 1/4 x 18 1/4	3	13
PL 500	22 x 22	22 1/4 x 22 1/4	4	18
PL 500	24 x 24	24 1/4 x 24 1/4	4	20
PL 500	24 x 36	24 1/4 x 36 1/4	4	35

Designed for all plaster walls and ceilings. The 1/4" safety edge gives the door a strong frame and prevents the plaster from being chipped under normal use.

Project: _____ Date: _____
 Contractor: _____ Architect: _____
 Sizes: _____ Quantity: _____ App Initials: _____

Corp Off: 1330 Progress Drive • Front Royal, VA 22630 • Phone: 1-800-255-5515 • Fax: 1-800-822-5001 www.wbdoors.com

RELATED PRODUCTS

WB AP 510 Series Recessed for Plaster

WB RPL 500 Series for Plaster



See us on



Like us on



facebook.com/wbdoors